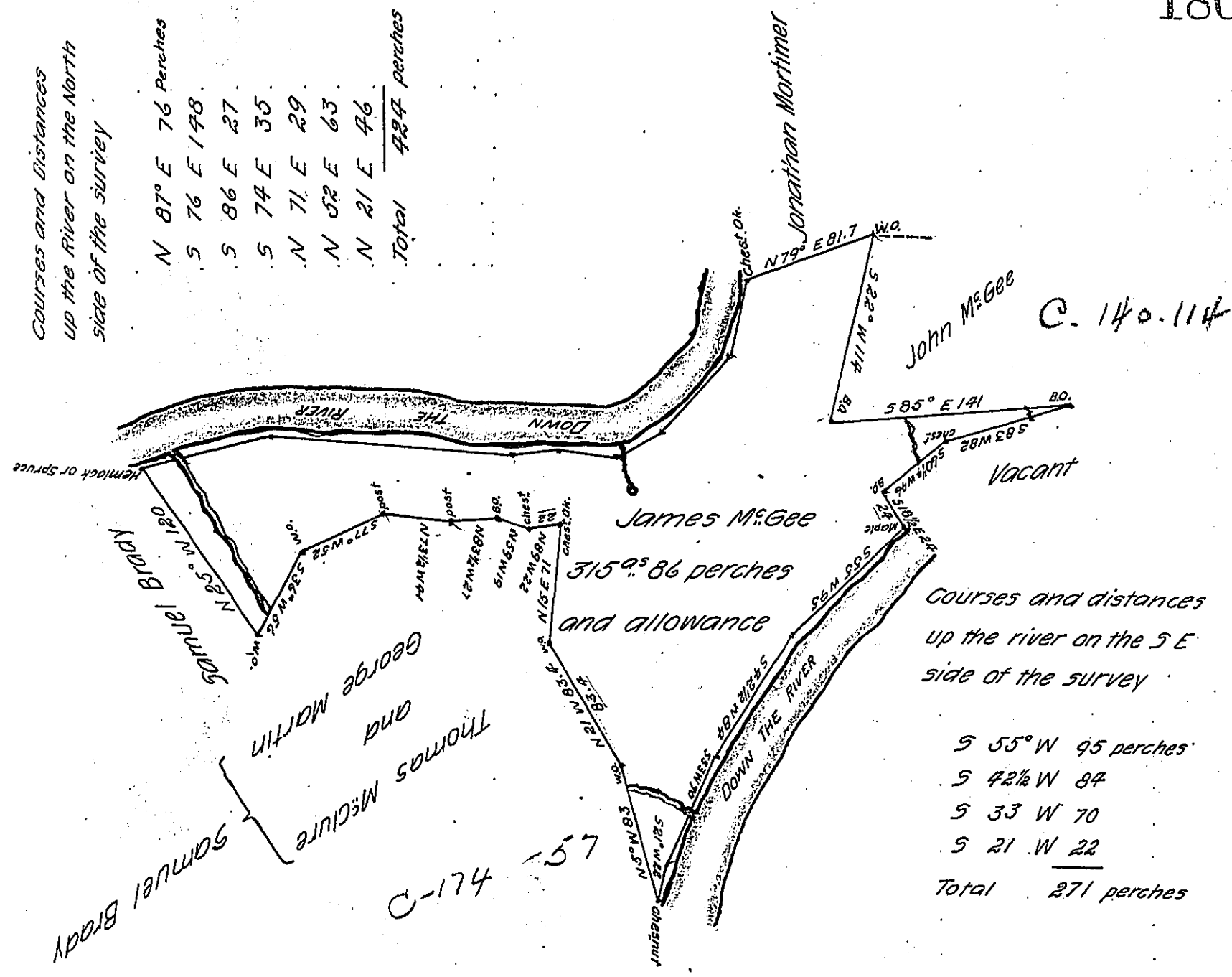


*Courses and Distances  
up the River on the North  
side of the survey*

N 87° E	76	Perches
S 76 E	198	
S 86 E	27	
S 74 E	35	
N 71 E	29	
N 52 E	63	
N 21 E	46	
<b>Total</b>	<b>484</b>	<b>perches</b>



*Courses and distances  
up the river on the S E  
side of the survey*

S 55° W	95	perches
S 42½ W	87	
S 33 W	70	
S 21 W	22	
<b>Total</b>	<b>271</b>	<b>perches</b>

*Surveyed to James McGee on the 13<sup>th</sup> of May AD 1825 the above described tract of land containing three hundred and fifteen acres and eighty six perches and the allowance of six per cent situate in Toby Township Armstrong County adjoining the Aligany River on the North and South East lands of John McGee and others by warrant of March 1<sup>st</sup> AD. 1825 To Gabriel Hiester Esq. S.G.*

*Robert Richards D.S.*

*IN TESTIMONY that the above is a copy of the original remaining on file in the Department of Internal Affairs of Pennsylvania, made conformably to an Act of Assembly approved the 16th day of February, 1833, I have hereunto set my Hand and caused the Seal of said Department to be affixed at Harrisburg, this*

*sixth day of January 1886*

*Isaac D. Brown  
Secretary of Internal Affairs.*